

6

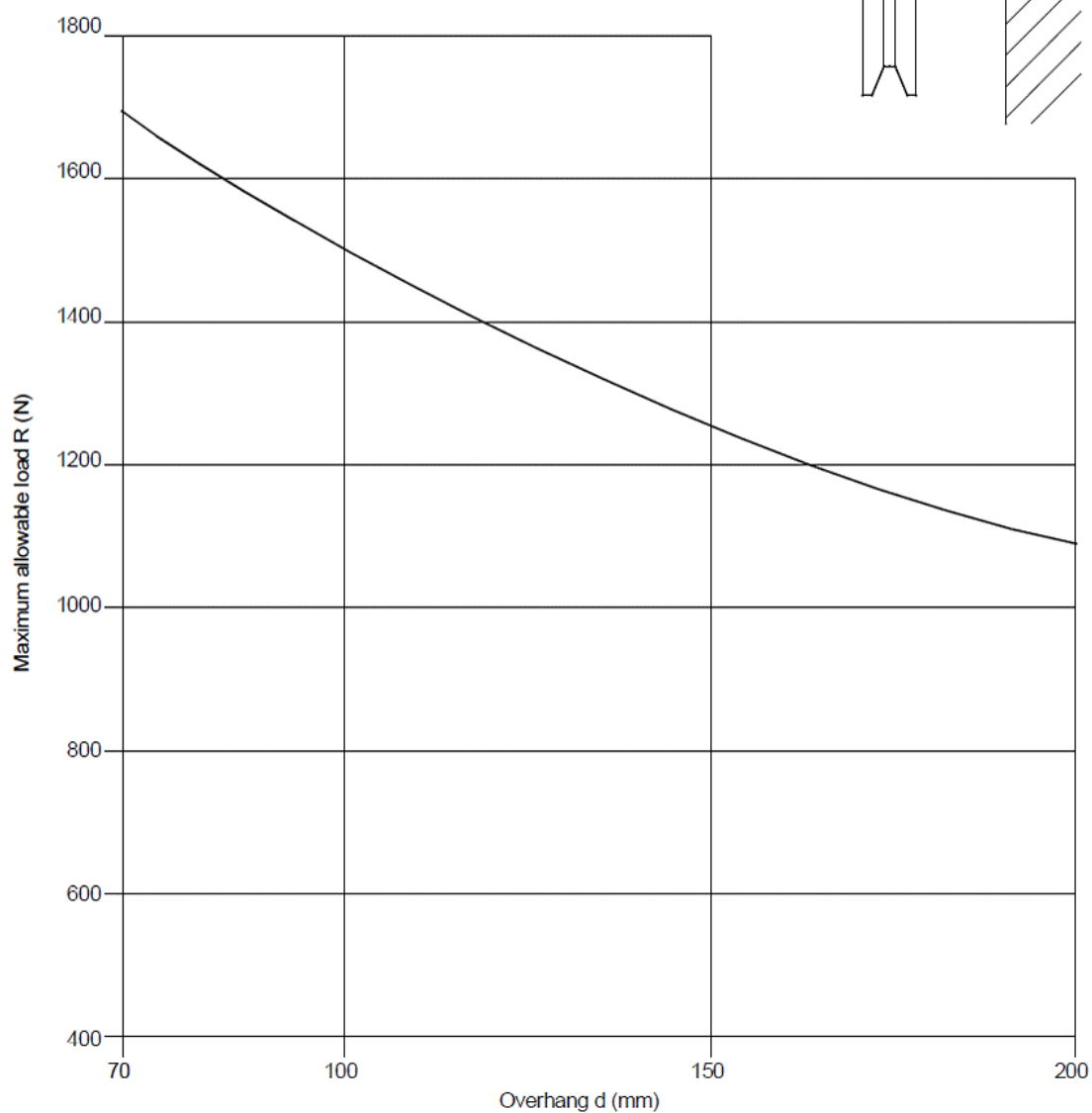
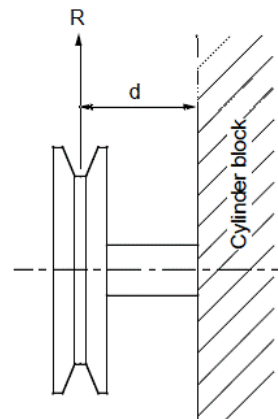
Perkins 400D Series

Maximum allowable load versus overhang, 402D-05, at rear of crankshaft

Maximum allowable load vs. overhang for using belt

Note: Consider the conditions for use and take proper measures if necessary.

Engine type : 402D-05
Loading : At rear of crankshaft



b**Perkins 400D Series****Maximum allowable load versus overhang, 402D-05, at front of crankshaft**